

# BIO-CAPIGEN VEG

Anti hair-loss vegetal complex

## INCI NAME:

Aqua (Water), Hydrolyzed Soy Protein, Propanediol, Glycerin, Panthenol, Polyquaternium-11, Propylene Glycol, Zinc Pca, Glucose, Ornithine HCl, Niacinamide, Arginine HCl, Panax Ginseng Root Extract, Citrulline, Glucosamine HCl, Pyridoxine HCl, Allium Cepa (Onion) Bulb Extract, Biotin.

## DOSE OF USE:

3-10 %

## SOLUBILITY:

HYDRO-SOLUBLE

## PRESERVATIVE:

PARABEN FREE

## COSMETIC USE:

- › Anti hair-loss preparations: Shampoos, lotions, gels
- › Reinforces capillary structure: Restructuring serums, lotions & shampoos
- › Intensive treatments in ampoules
- › Anti dandruff treatments
- › Treatments for oily hairs

## DESCRIPTION:

**BIO-CAPIGEN VEG** is an **anti-hair loss and hair growth complex**, from **botanical origin**.

A **botanical alternative to animal keratin**.

Its **composition** is made of:

- **Hydrolyzed soy protein:** A balanced composition of **peptides, amino acids, and mineral salts**.
- **Red Onion Extract:** Stimulates hair growth
- **Ginseng Extract:** Growth promoting activity
- **Zinc PCA:** Sebum inhibiting activity
- **Amino acids:** Combat hair loss
- **Polyquaternium-11:** Conditioning/ film forming
- **Glucose:** Energy source
- **Vitamins from Group B:** Reinforces hair vitality

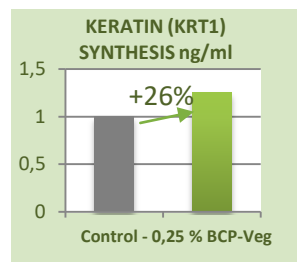
## PROPERTIES:

### EFFICACY TESTS:

#### In-vitro keratin stimulation

**Keratin** is a key structural protein of hair. Provides elasticity, resistance and shine.

Under in-vitro test on human keratinocytes, **0,25 % BIO-CAPIGEN VEG** has shown a **Keratin (KRT1) stimulation synthesis up to 26 %:**

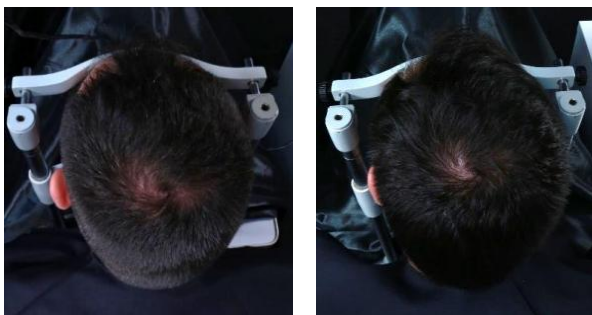
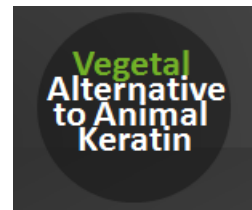
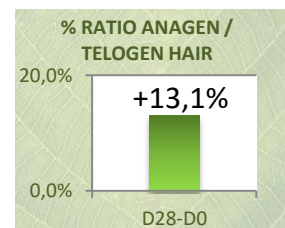
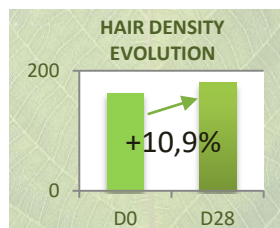


#### Clinical hair growth & Anti-hair loss study

- › 20 male volunteers with androgenic alopecia
- › Test products: Shampoo dosed with 3% Bio-Capigen Veg +1 ampoule dosed 10%
- › Application: 3 times a week for 28 days

#### After 28 days BIO-CAPIGEN VEG induced:

- **10,9%** increase in Hair density
- **10,2%** increase in Hair count
- **13,1%** increase in the anagen/telogen ratio



Volunteer hair density evolution during the study. Left image T=0, Right image T=28 days

N a t u r a l l y E f f e c t i v e